

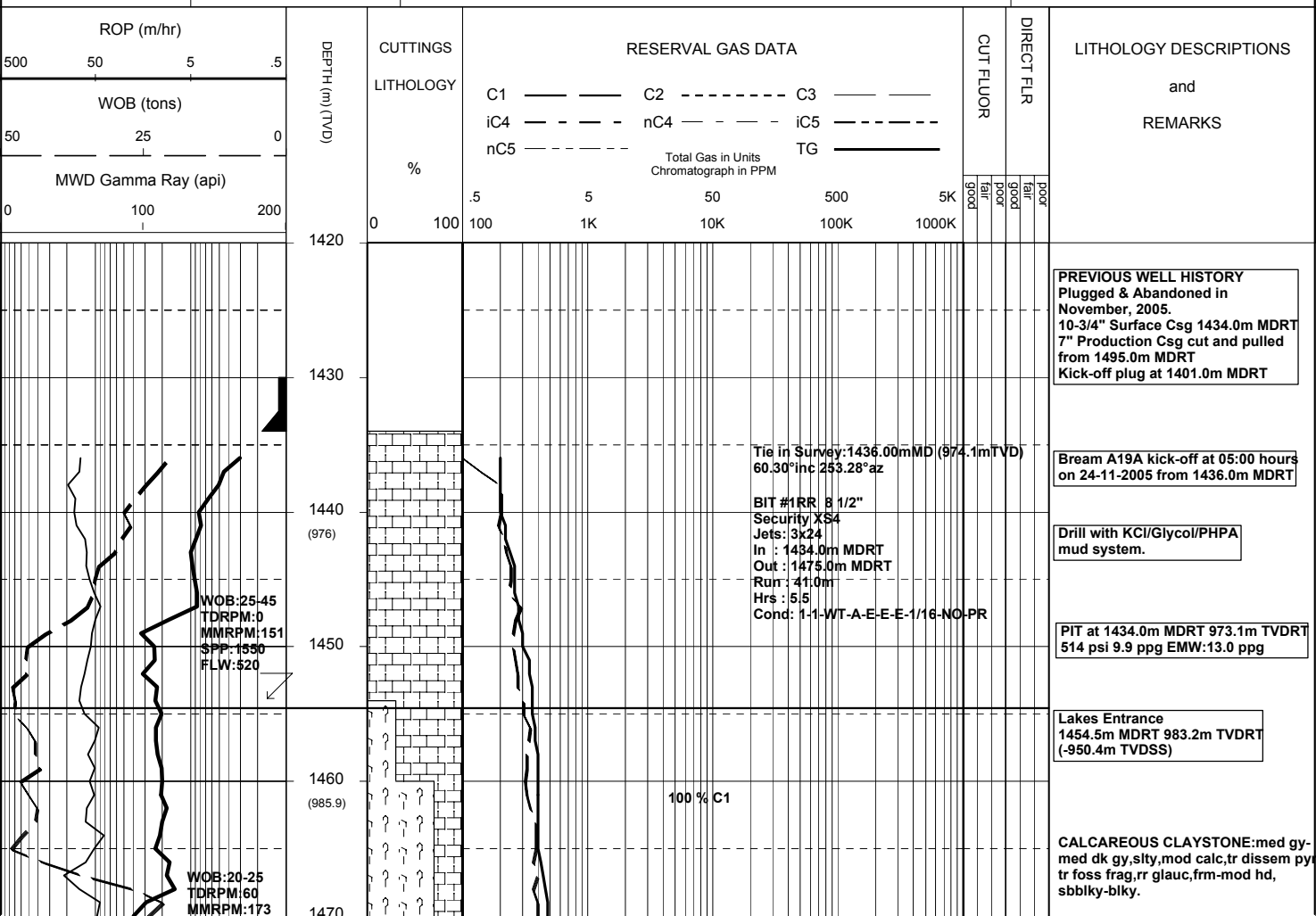
# MASTERLOG

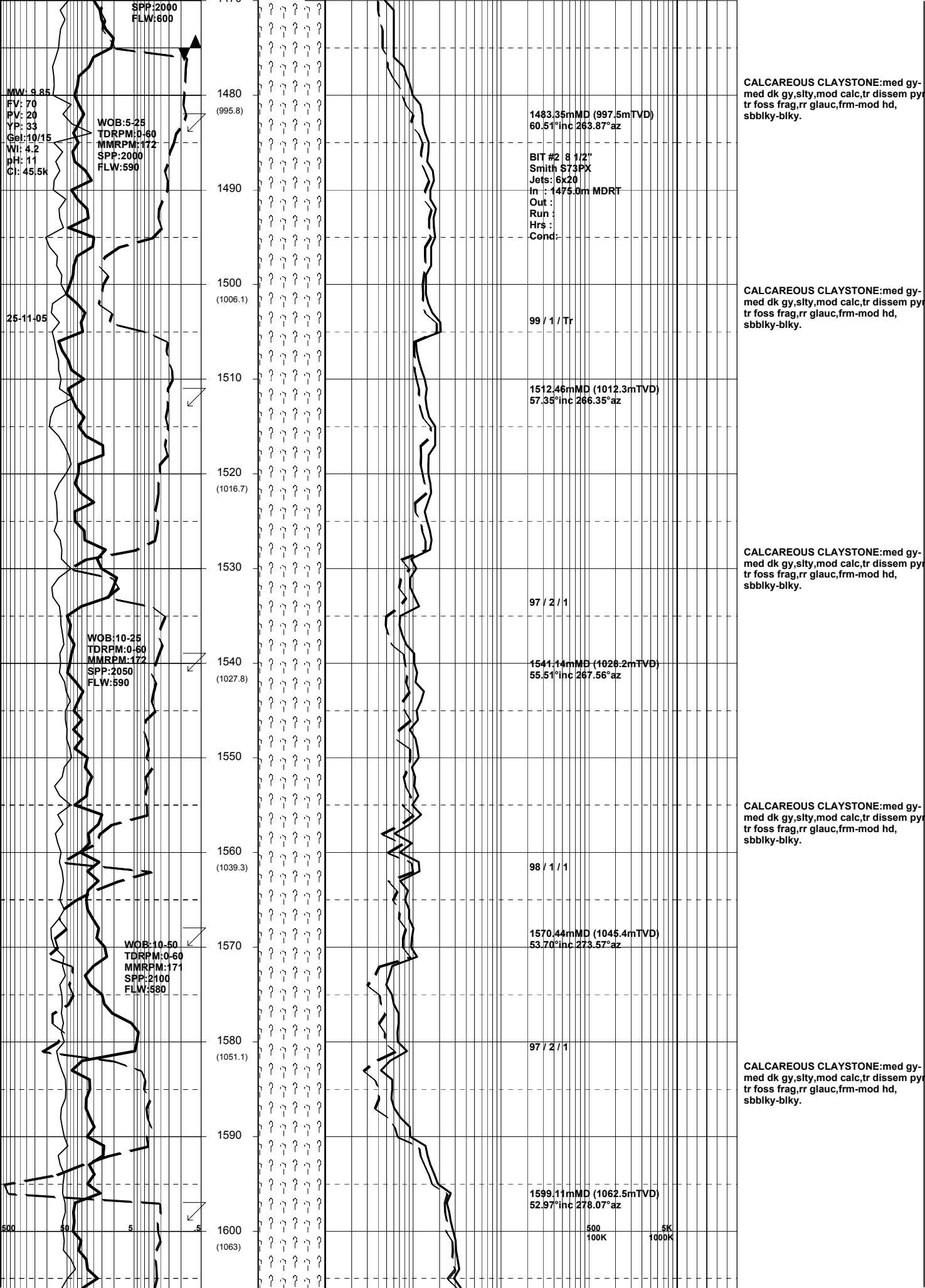
## BMA A19A

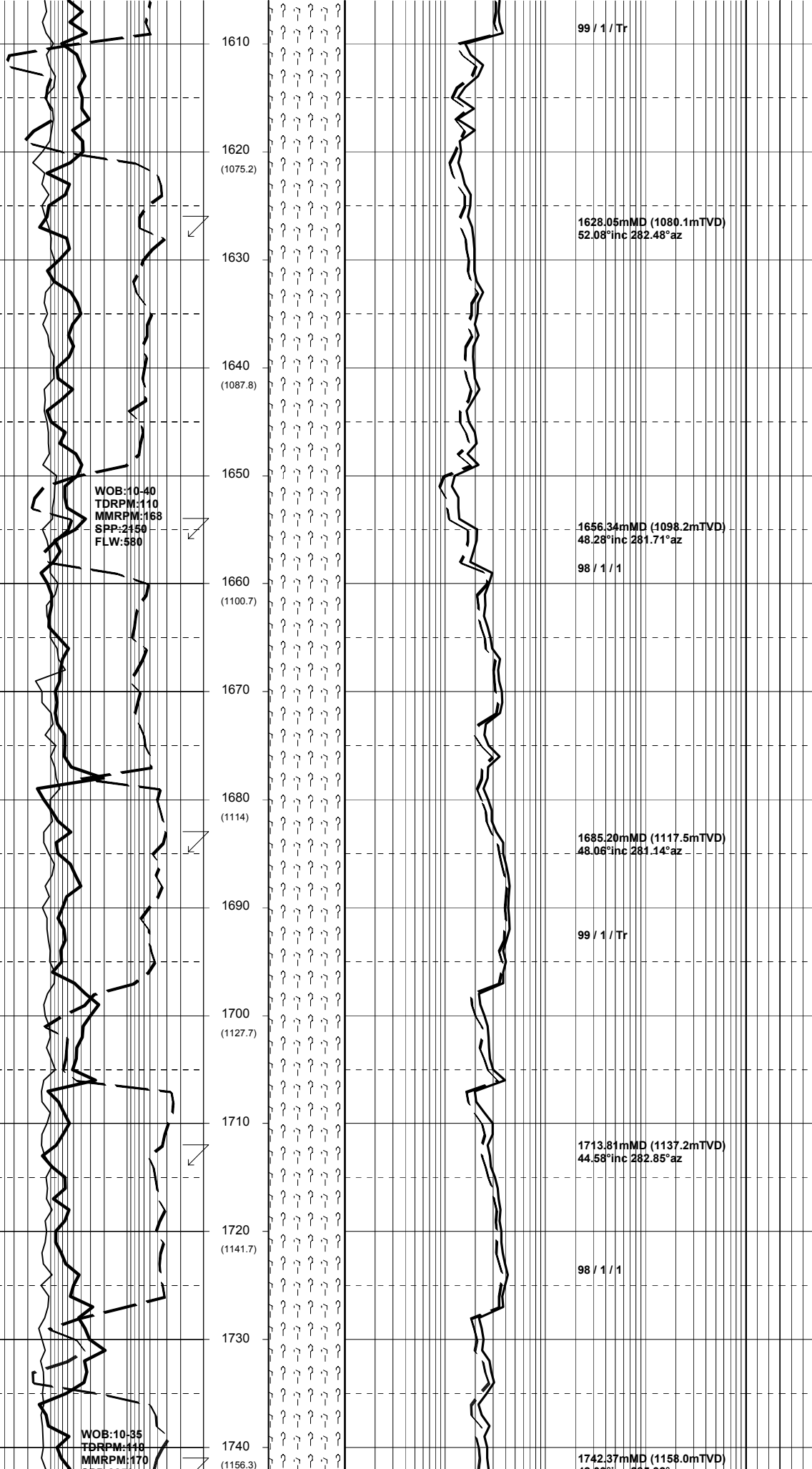


GENERAL	SURFACE POSITON	HOLE / CASING INFO	DATE / DEPTH	ENGINEERS
Country : AUSTRALIA	GDA Co-ord X : 147 46 19.968 E	8-1/2" Hole to	Kick Off Date : 24-11-2005	Steve Oades Mark Smith
Permit : VIC L13	GDA Co-ord Y : 38 29 58.893 S		Total Depth Date :	
Field : Bream	MGA Co-ord X : 567336.12mE	10-3/4" Casing Shoe at 1434.0m MDRT	Total Depth :	
Basin : GIPPSLAND	MGA Co-ord Y : 5738458.22mN	7" Production Csg at	True Vertical Depth :	
Well Type : DEVELOPMENT	RT to MSL : 32.82m		Log Scale : 1/ 500	
Rig Name : NABORS 453	RT to Sea Bed : 92.22m			

ABBREVIATIONS	LITHOLOGY LEGEND	ENGINEERING LEGEND
MW Mud Weight FV Funnel Viscosity PV Plastic Viscosity YP Yield Point Gel Gel Strength WL Water Loss KCl Potassium Chloride Cl Chlorides Incl Inclination Az Azimuth WOB Weight on Bit (klbs) RPM Rotations Per Min FLW Flow Rate (gpm) SPP Pump Pressure (psi) RR Re-Run Bit TG Trip Gas CG Connection Gas BG Background Gas DGP Drilled Gas Peak MM Mud Motor	CLAYSTONE SILTSTONE SST: F - V FINE SST: MEDIUM SST: COARSE SHALE MARL LIMESTONE DOLOMITE CHERT CONGLOMERATE COAL BRYOZOA RADIOLARITES ECHINOIDES CORALS FORAMINIFERA LITHIC FRAGMENT CARB FRAGMENT QUARTZITE INTRUSIVES GLAUCONITE PYRITE CEMENT	CASING SHOE LINER HANGER BIT CHANGE DEVI. SURVEY SWC UNRECOV SIDEWALL CORE CORE WIRELINE LOGS MDT POINTS: PRESSURE ONLY SAMPLE SEAL FAILURE TIGHT







CALCAREOUS CLAYSTONE:med gy-med dk gy,silty,mod calc,tr dissem pyr,rr foss frag,frm-mod hd, sbbiky-blky.

1628.05mMD (1080.1mTVD)  
52.08°inc 282.48°az

CALCAREOUS CLAYSTONE:med gy-med dk gy,silty,mod calc,tr dissem pyr,rr foss frag,frm-mod hd, sbbiky-blky.

1656.34mMD (1098.2mTVD)  
48.28°inc 281.71°az

98 / 1 / 1

CALCAREOUS CLAYSTONE:lt gy-med gy,silty,mod calc,tr dissem pyr,rr foss frag,frm-mod hd, sbbiky-blky.

1685.20mMD (1117.5mTVD)  
48.06°inc 281.14°az

99 / 1 / Tr

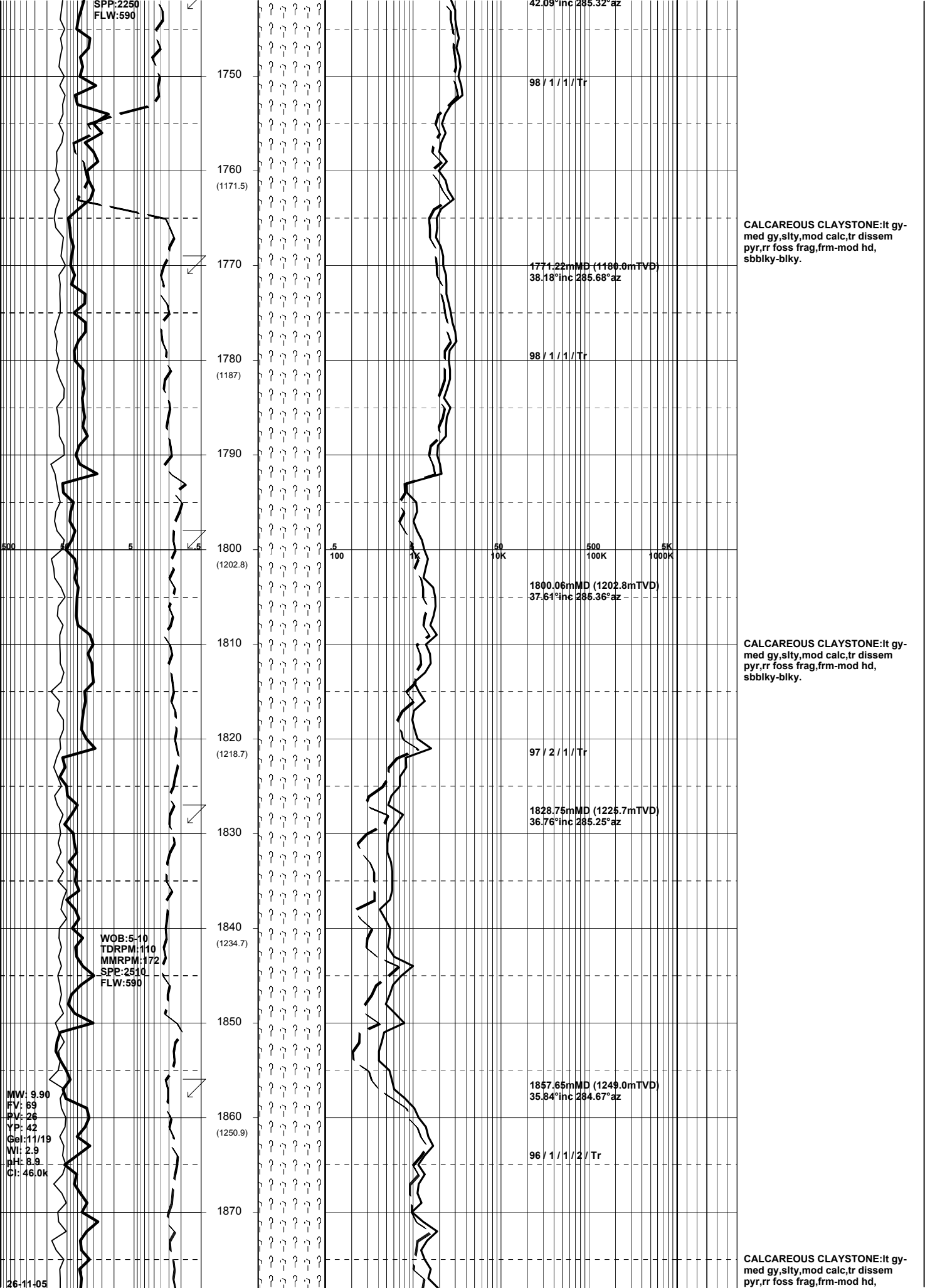
CALCAREOUS CLAYSTONE:lt gy-med gy,silty,mod calc,tr dissem pyr,rr foss frag,frm-mod hd, sbbiky-blky.

1713.81mMD (1137.2mTVD)  
44.58°inc 282.85°az

98 / 1 / 1

WOB:10-35  
TDRPM:118  
MMRPM:170

1742.37mMD (1158.0mTVD)



SPP:2250  
FLW:590

42.09° inc 285.32° az  
98 / 1 / 1 / Tr

1750  
1760  
(1171.5)

**CALCAREOUS CLAYSTONE:** It gy- med gy, silty, mod calc, tr disseminated pyr, rr foss frag, frm-mod hd, sbbiky-blky.

1771.22mMD (1180.0mTVD)  
38.18° inc 285.68° az

1770  
1780  
(1187)

98 / 1 / 1 / Tr

1790  
1800  
(1202.8)

1800.06mMD (1202.8mTVD)  
37.61° inc 285.36° az

**CALCAREOUS CLAYSTONE:** It gy- med gy, silty, mod calc, tr disseminated pyr, rr foss frag, frm-mod hd, sbbiky-blky.

1810  
1820  
(1218.7)

97 / 2 / 1 / Tr

1828.75mMD (1225.7mTVD)  
36.76° inc 285.25° az

1830  
1840  
(1234.7)

WOB:5-10  
TDRPM:110  
MMRPM:172  
SPP:2510  
FLW:590

1857.65mMD (1249.0mTVD)  
35.84° inc 284.67° az

1850  
1860  
(1250.9)

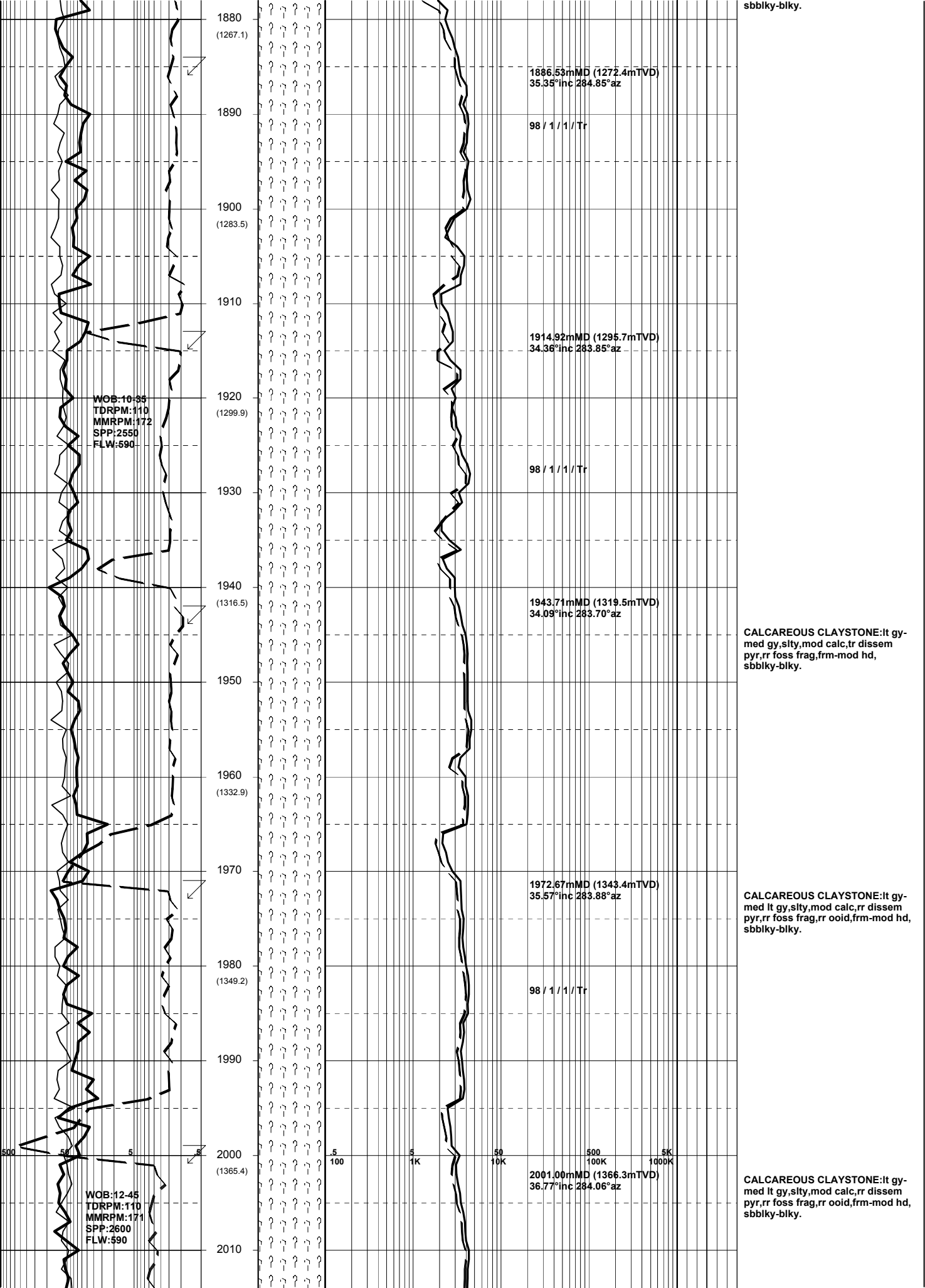
96 / 1 / 1 / 2 / Tr

1870

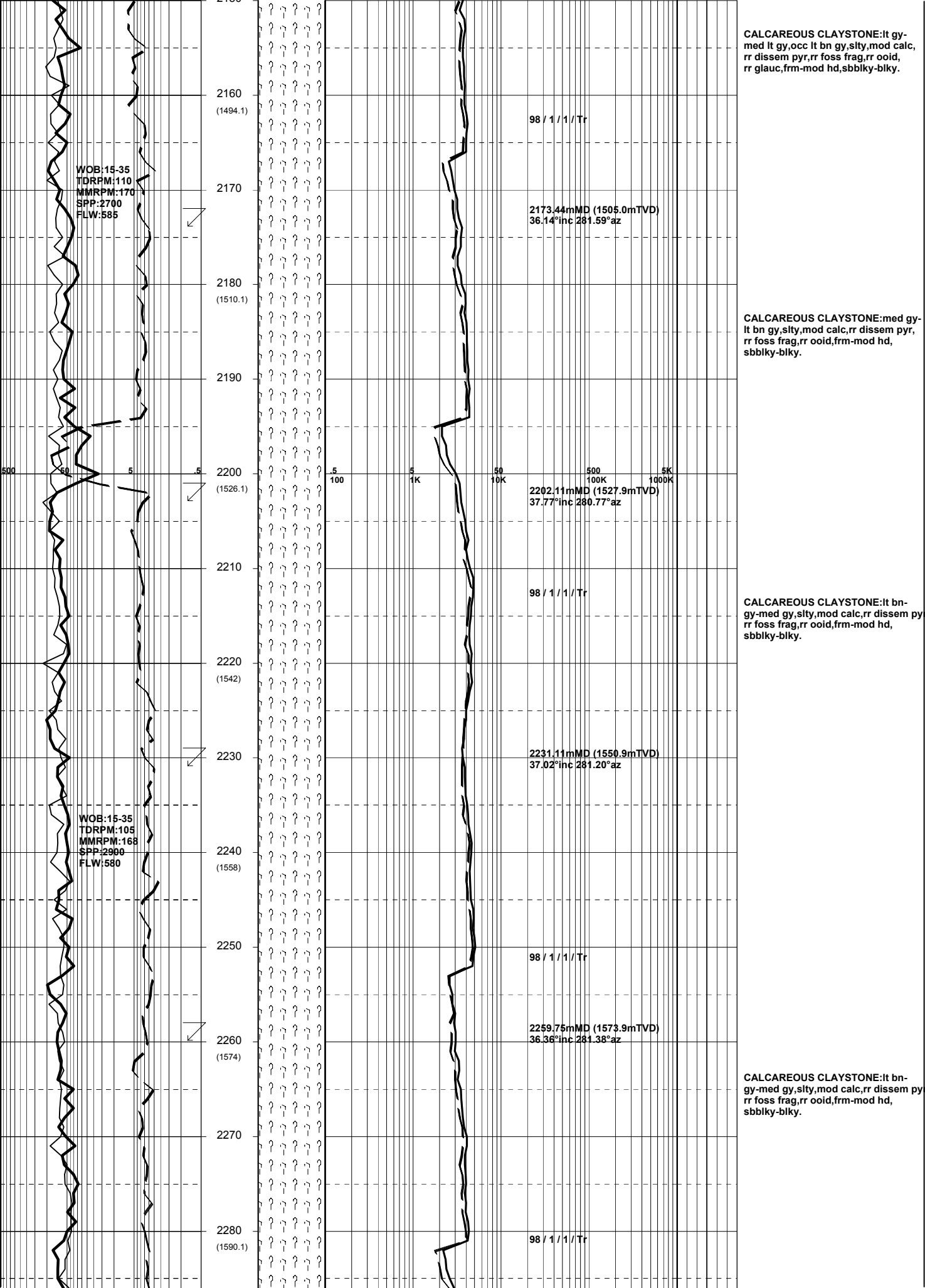
**CALCAREOUS CLAYSTONE:** It gy- med gy, silty, mod calc, tr disseminated pyr, rr foss frag, frm-mod hd, sbbiky-blky.

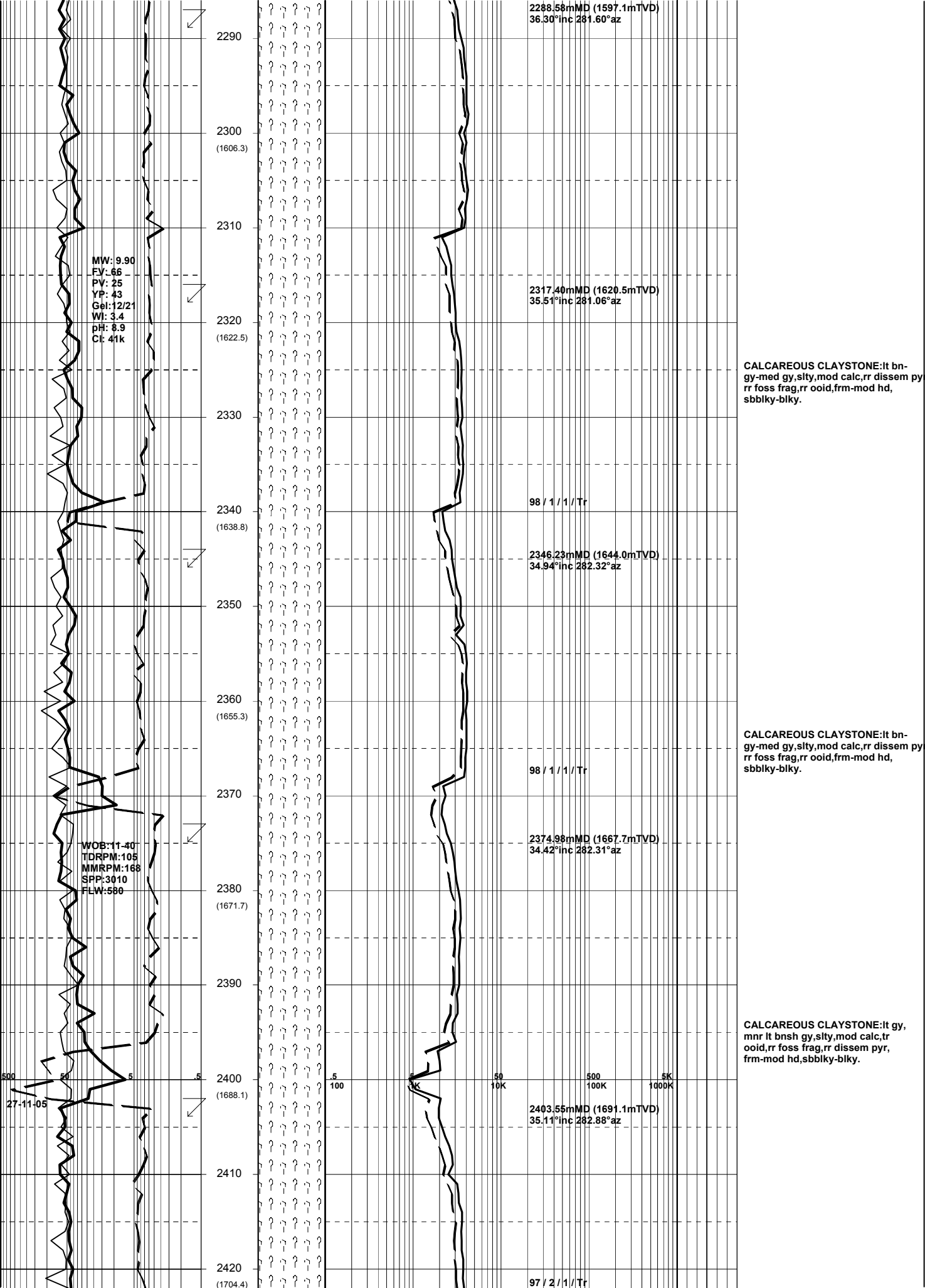
MW: 9.90  
FV: 69  
PV: 26  
YP: 42  
Gel: 11/19  
WI: 2.9  
pH: 8.9  
CI: 46.0K

26-11-05









2290

2288.58mMD (1597.1mTVD)  
36.30°inc 281.60°az

2300  
(1606.3)

2310

MW: 9.90  
FV: 66  
PV: 25  
YP: 43  
Gel: 12/21  
WI: 3.4  
pH: 8.9  
Cl: 41k

2317.40mMD (1620.5mTVD)  
35.51°inc 281.06°az

2320  
(1622.5)

2330

CALCAREOUS CLAYSTONE:lt bn-  
gy-med gy,sity,mod calc,rr dissem pyr  
rr foss frag,rr ooid,frm-mod hd,  
sbbiky-biky.

2340  
(1638.8)

98 / 1 / 1 / Tr

2350

2346.23mMD (1644.0mTVD)  
34.94°inc 282.32°az

2360  
(1655.3)

CALCAREOUS CLAYSTONE:lt bn-  
gy-med gy,sity,mod calc,rr dissem pyr  
rr foss frag,rr ooid,frm-mod hd,  
sbbiky-biky.

2370

98 / 1 / 1 / Tr

2380  
(1671.7)

2374.98mMD (1667.7mTVD)  
34.42°inc 282.31°az

WOB:11.40  
TORPM:105  
MMRPM:168  
SPP:3010  
FLW:580

2390

CALCAREOUS CLAYSTONE:lt gy,  
mnr lt bnsh gy,sity,mod calc,tr  
ooid,rr foss frag,rr dissem pyr,  
frm-mod hd,sbbiky-biky.

2400  
(1688.1)

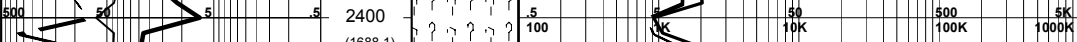
2403.55mMD (1691.1mTVD)  
35.11°inc 282.88°az

27-11-05

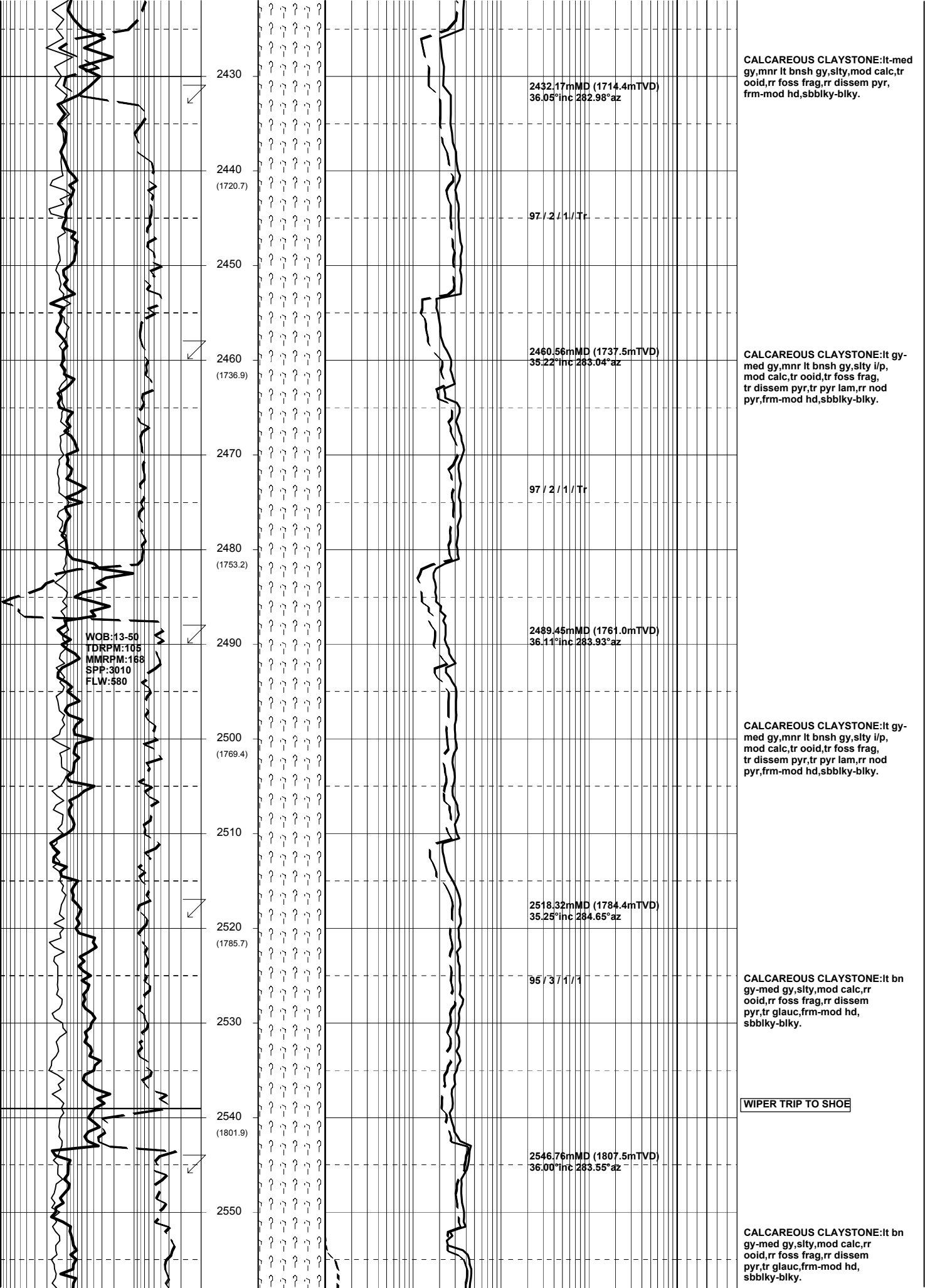
2410

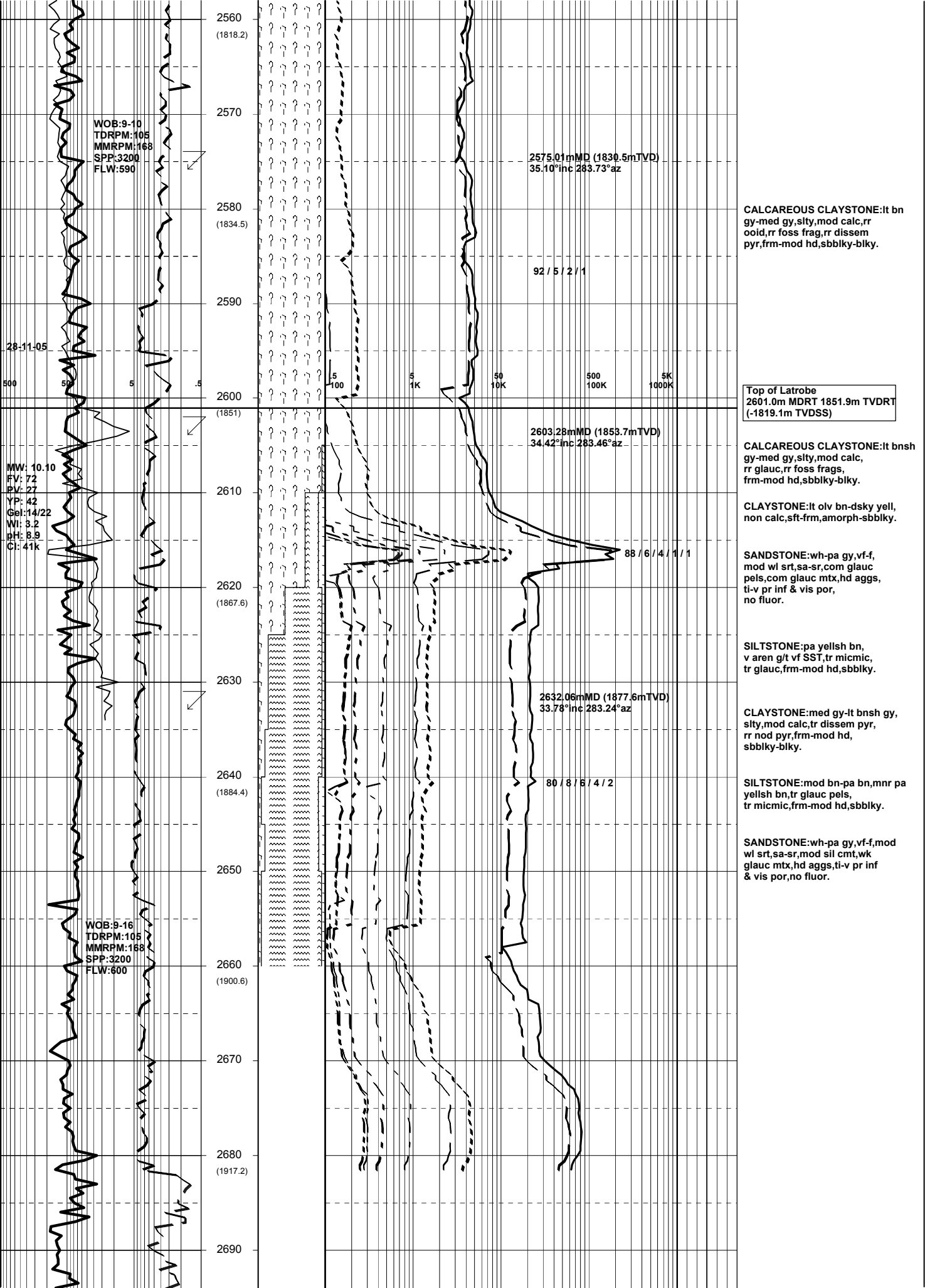
2420  
(1704.4)

97 / 2 / 1 / Tr









WOB-9-10  
TDRPM:105  
MMRPM:168  
SPP:3200  
FLW:590

2560 (1818.2)  
2570  
2580 (1834.5)  
2590  
2600 (1851)  
2610  
2620 (1867.6)  
2630  
2640 (1884.4)  
2650  
2660 (1900.6)  
2670  
2680 (1917.2)  
2690

2575.01mMD (1830.5mTVD)  
35.10°inc 283.73°az

92 / 5 / 2 / 1

5 5K 50 500 5K  
100 10K 100K 1000K

Top of Latrobe  
2601.0m MDRT 1851.9m TVDRT  
(-1819.1m TVDSS)

2603.28mMD (1853.7mTVD)  
34.42°inc 283.46°az

CALCAREOUS CLAYSTONE:lt bnsh  
gy-med gy,sity,mod calc,  
rr glauc,rr foss frags,  
frm-mod hd,sbbiky-blky.

CLAYSTONE:lt olv bn-dsky yell,  
non calc,sft-frm,amorph-sbbiky.

SANDSTONE:wh-pa gy,vf-f,  
mod wl srt,sa-sr,com glauc  
pels,com glauc mtx,hd aggs,  
ti-v pr inf & vis por,  
no fluor.

SILTSTONE:pa yellsh bn,  
v aren g/t vf SST,tr micmic,  
tr glauc,frm-mod hd,sbbiky.

2632.06mMD (1877.6mTVD)  
33.78°inc 283.24°az

CLAYSTONE:med gy-lt bnsh gy,  
sity,mod calc,tr dissem pyr,  
rr nod pyr,frm-mod hd,  
sbbiky-blky.

SILTSTONE:mod bn-pa bn,mnr pa  
yellsh bn,tr glauc pels,  
tr micmic,frm-mod hd,sbbiky.

80 / 8 / 6 / 4 / 2

SANDSTONE:wh-pa gy,vf-f,mod  
wl srt,sa-sr,mod sil cmt,wk  
glauc mtx,hd aggs,ti-v pr inf  
& vis por,no fluor.

WOB-9-16  
TDRPM:105  
MMRPM:168  
SPP:3200  
FLW:600

28-11-05

MW: 10.10  
FV: 72  
PV: 27  
YP: 42  
Gel:14/22  
Wt: 3.2  
pH: 8.9  
Cl: 41k



2700